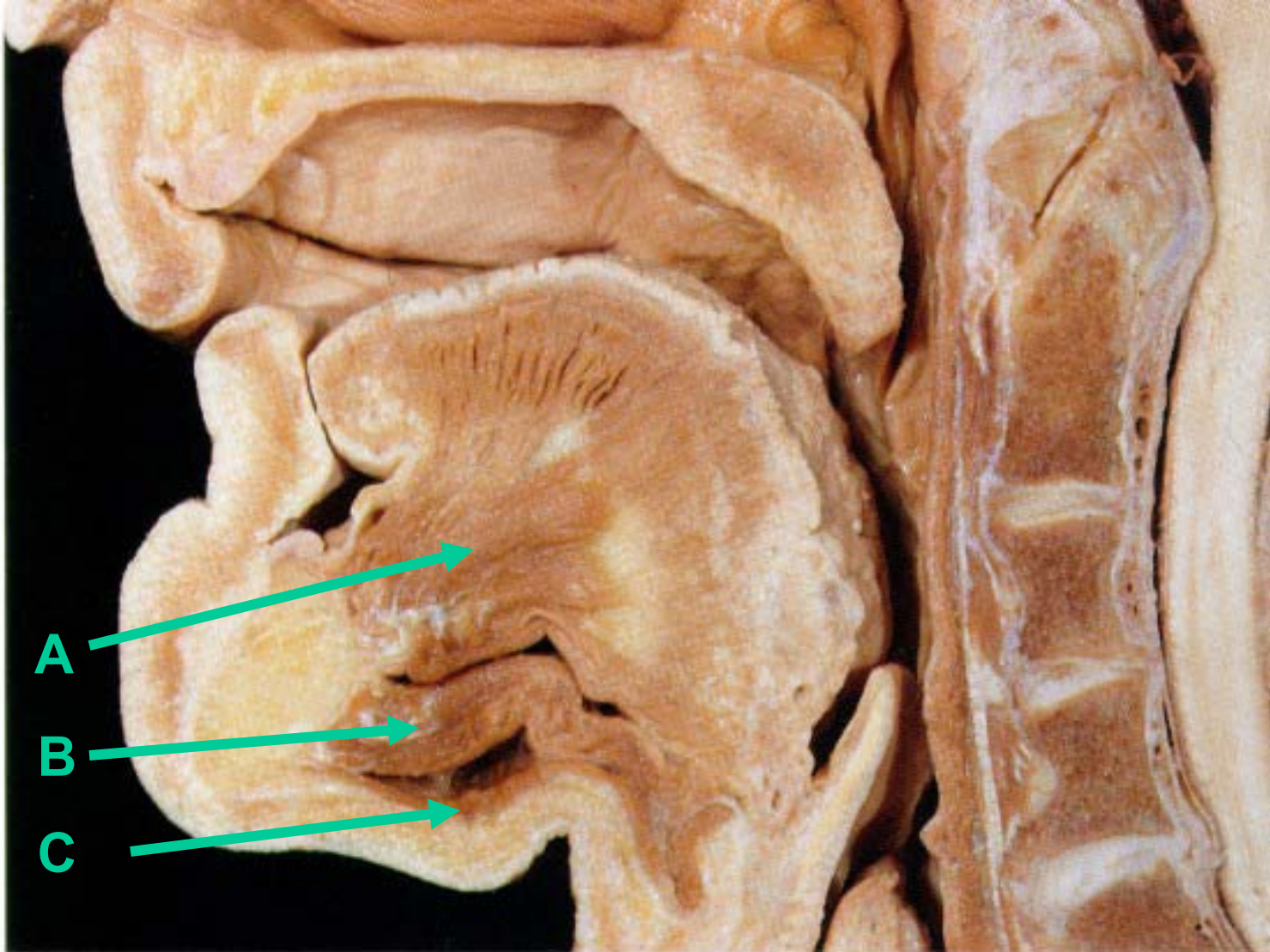


# Practice Practical for Head and Neck Exam

Answer Key at End (slide 28)

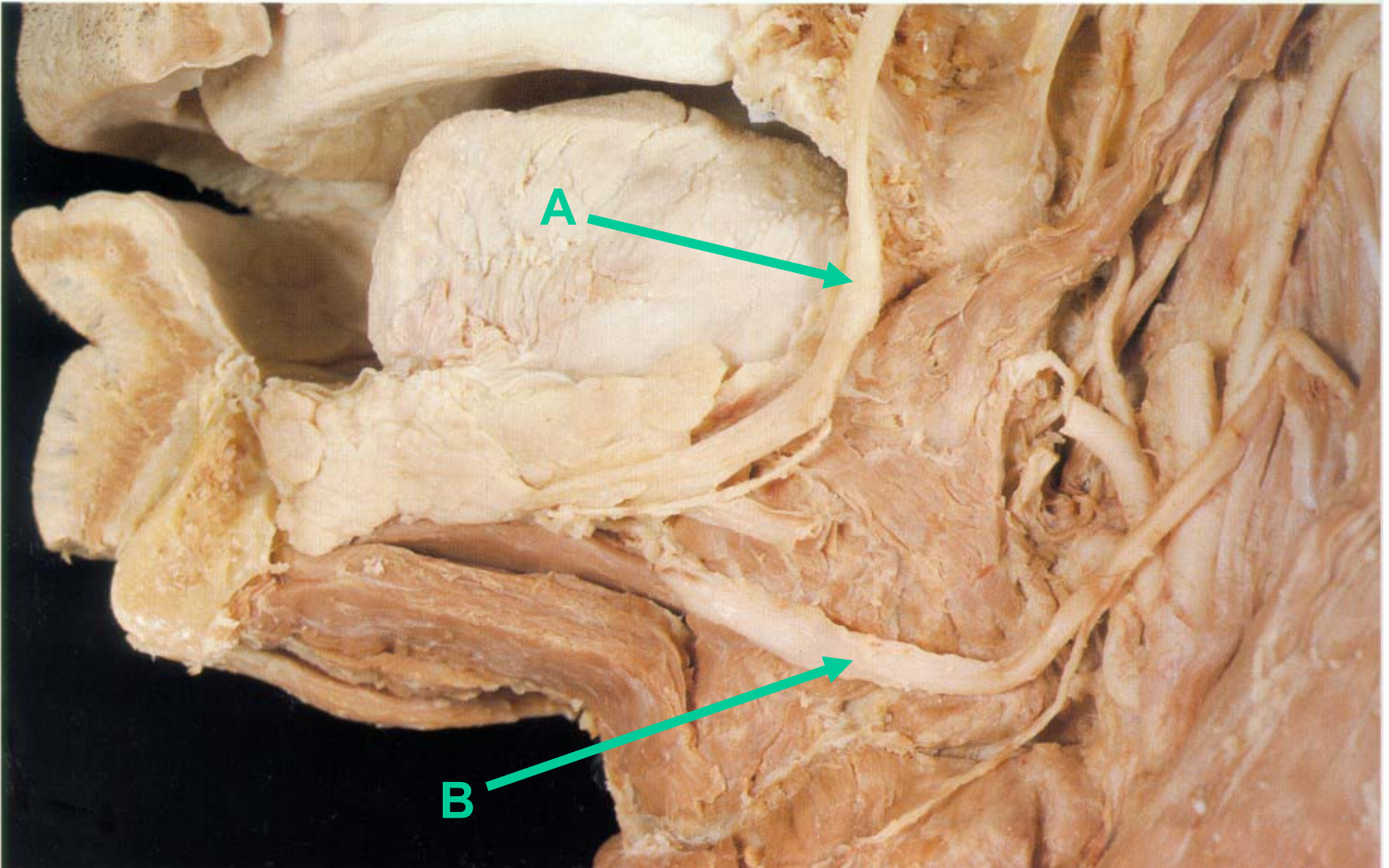
← NOSE

# 1. Identify

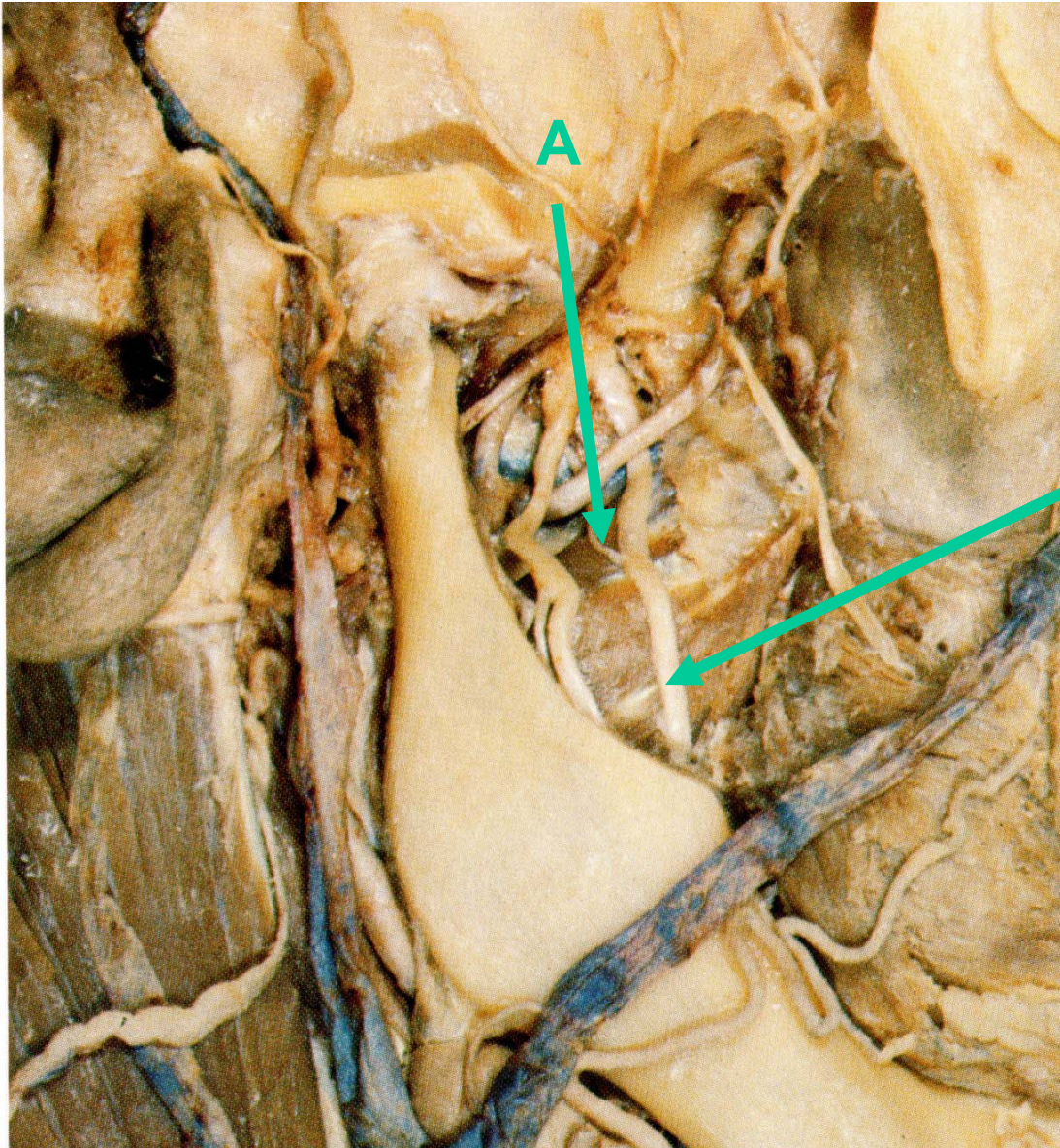




## 2. Identify nerves

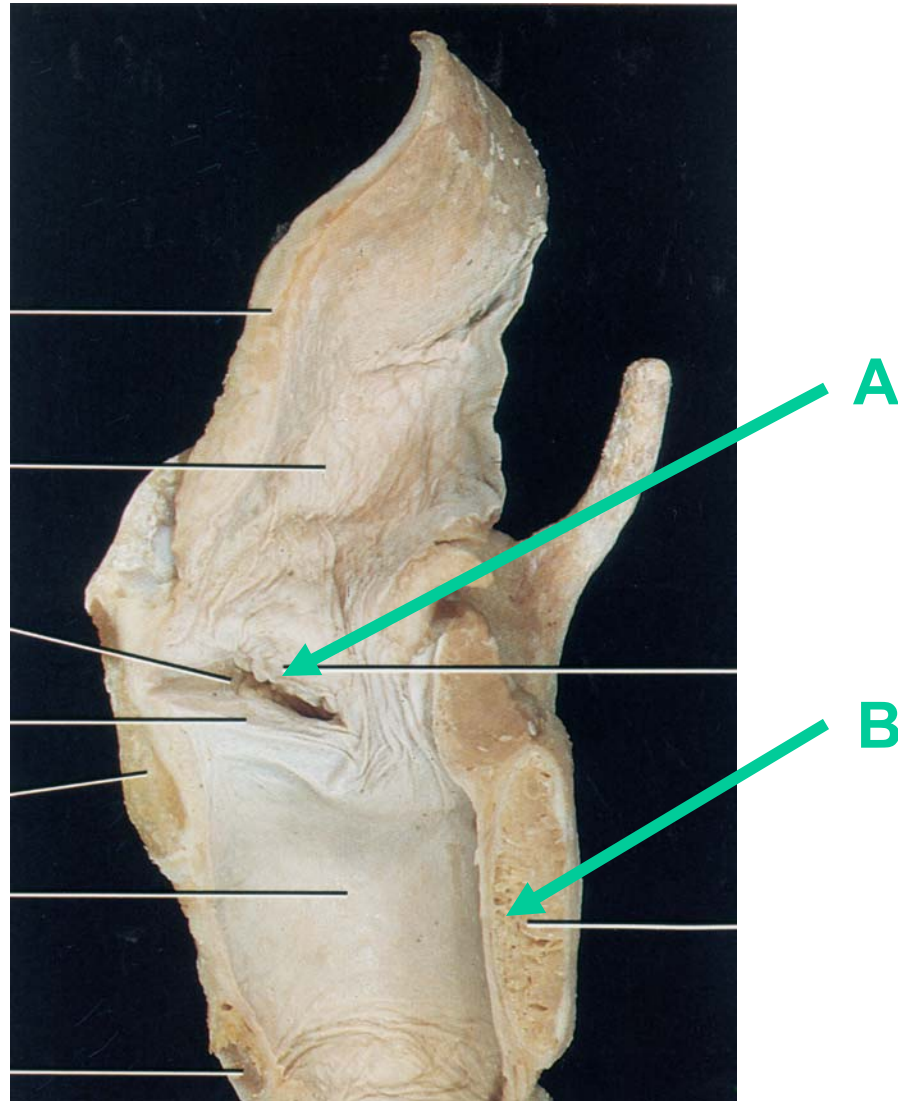


### 3. Identify



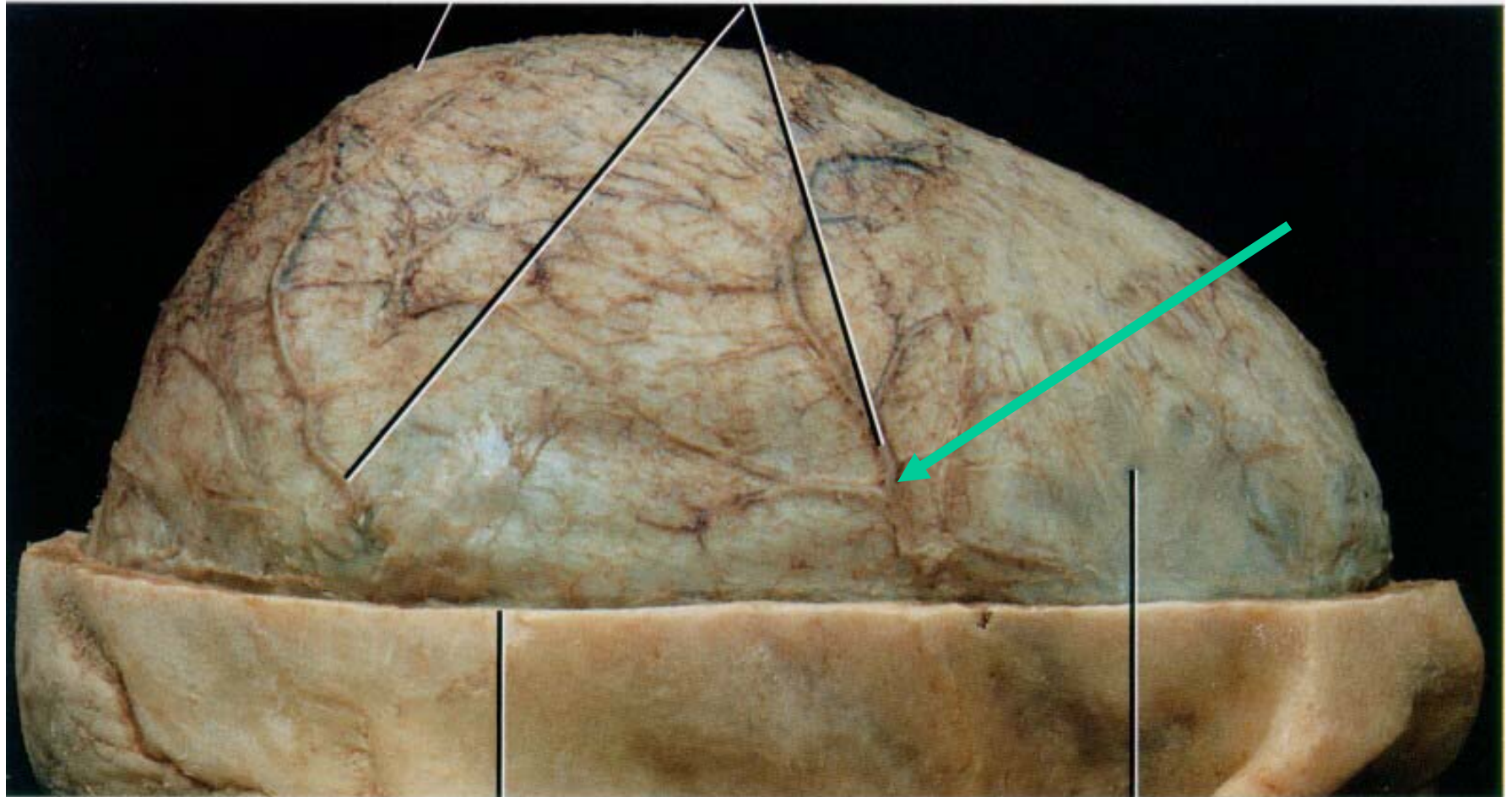


## 4. Identify structures in Larynx



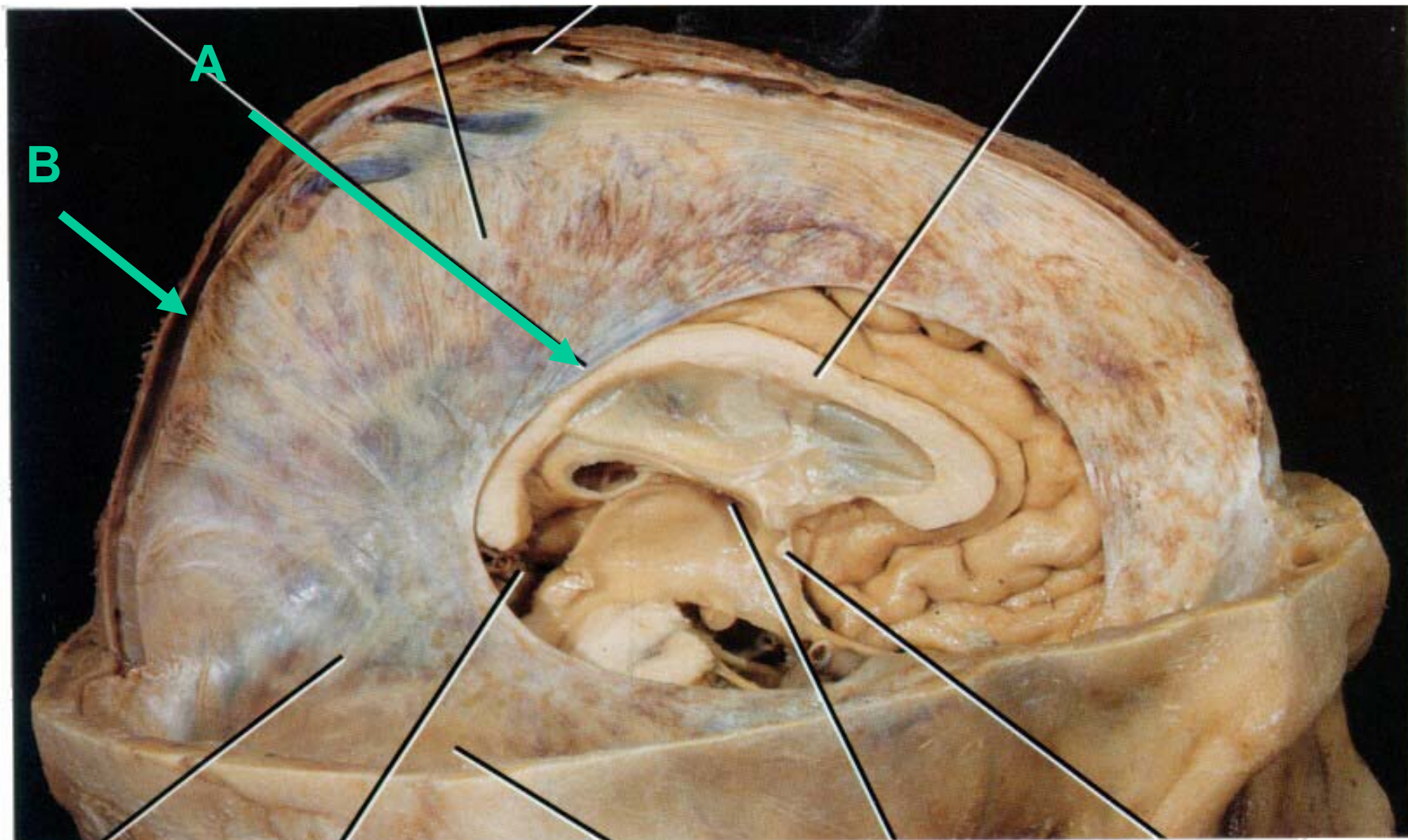
## 5. Identify

NOSE →

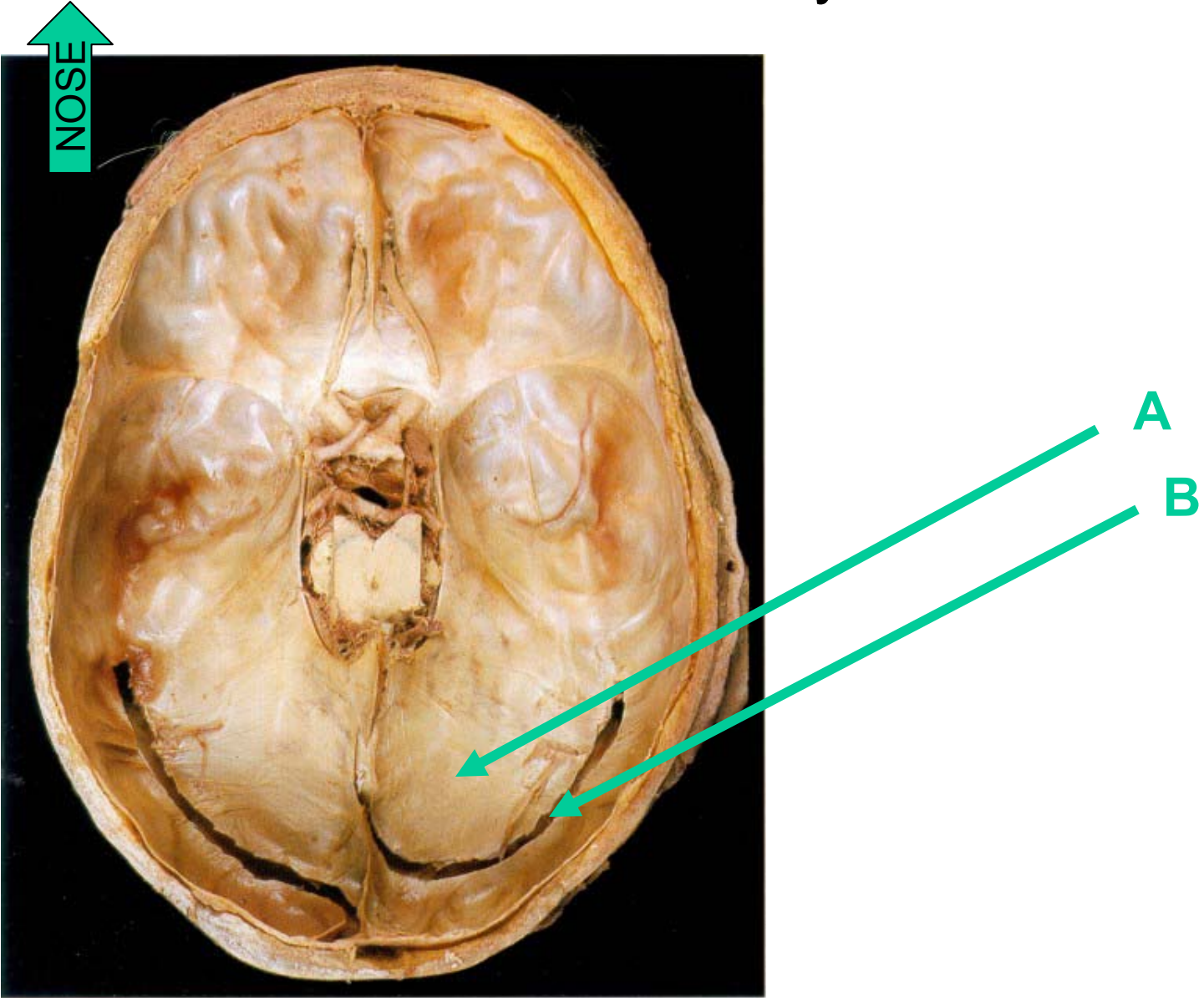


Cut surface of skull

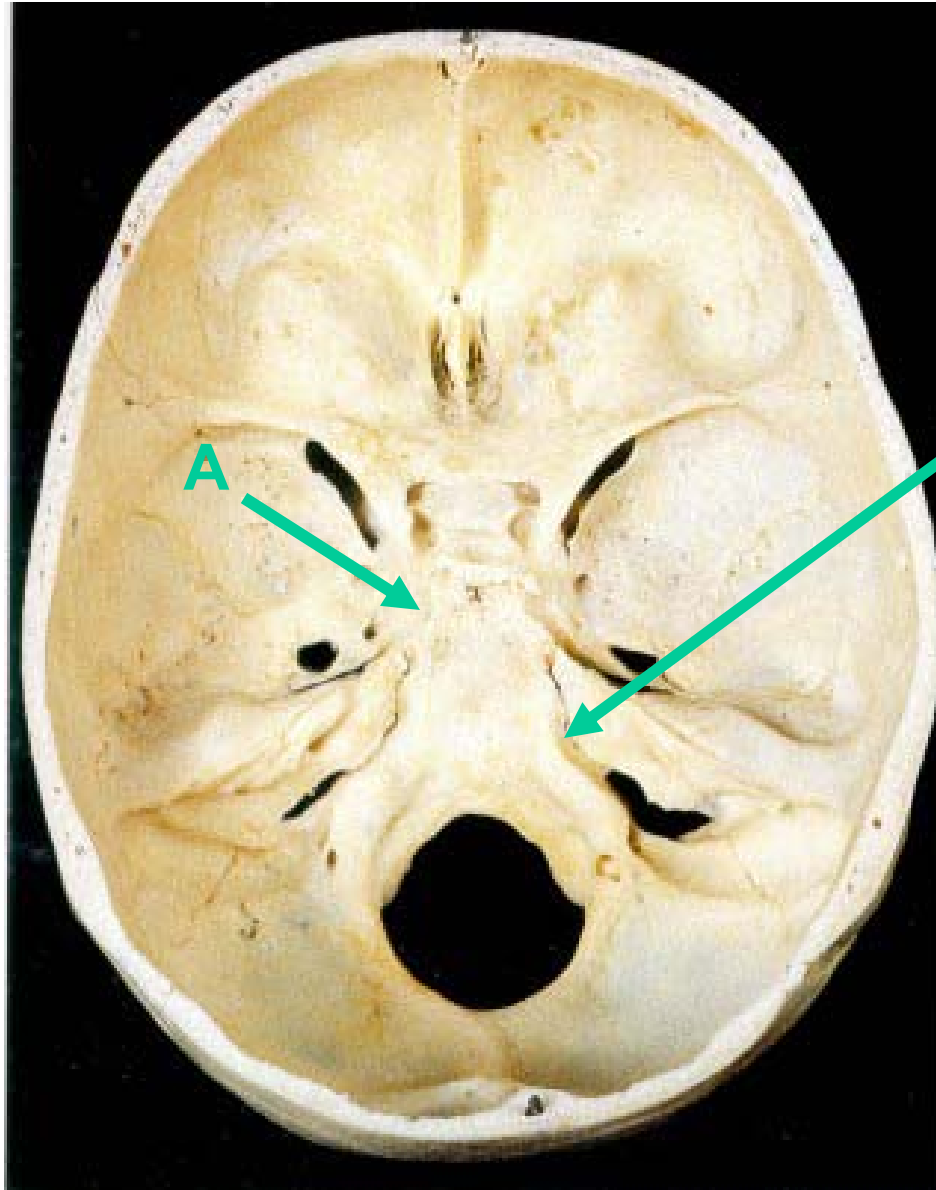
# 6. Identify Sinuses

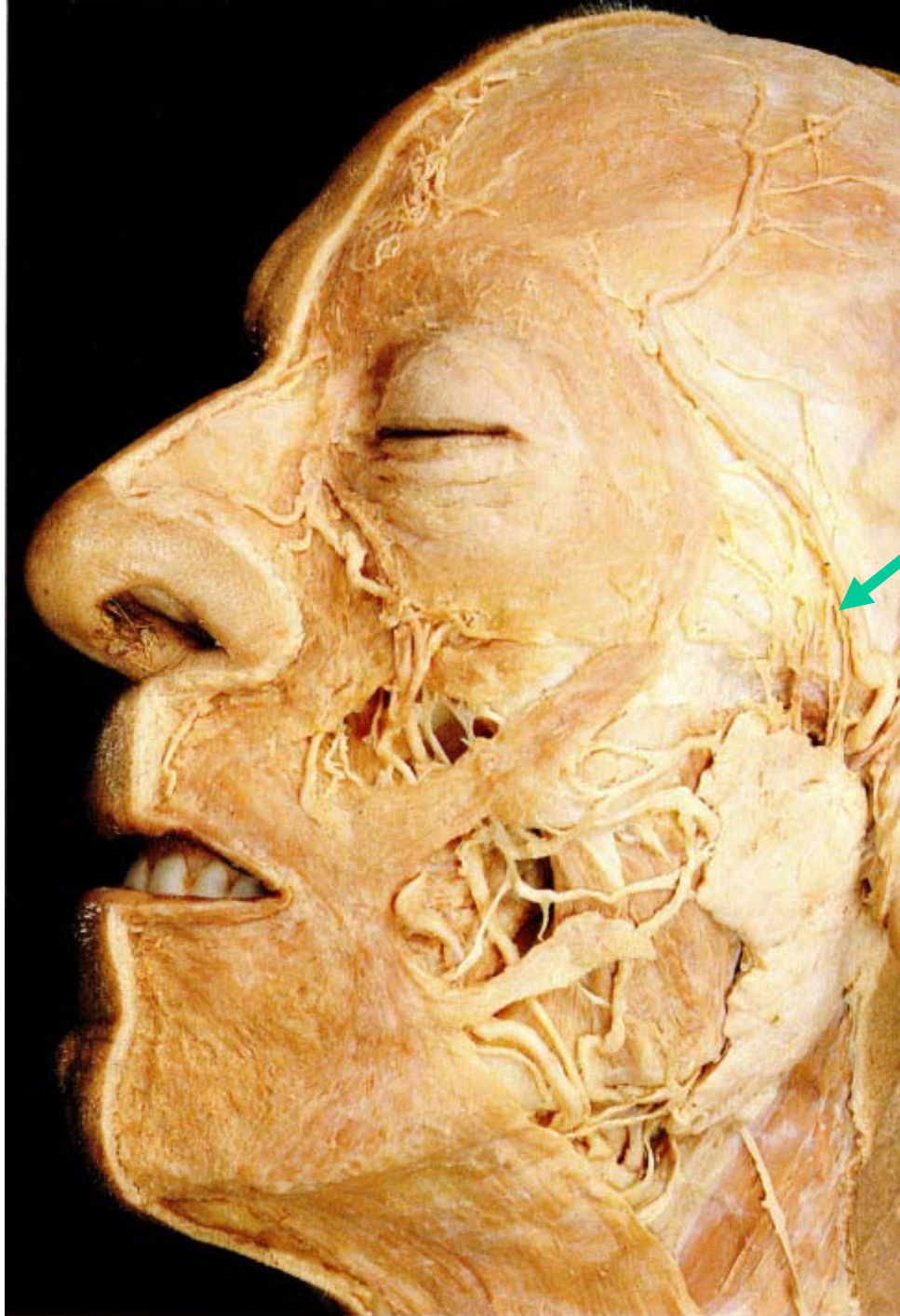


# 7. Identify



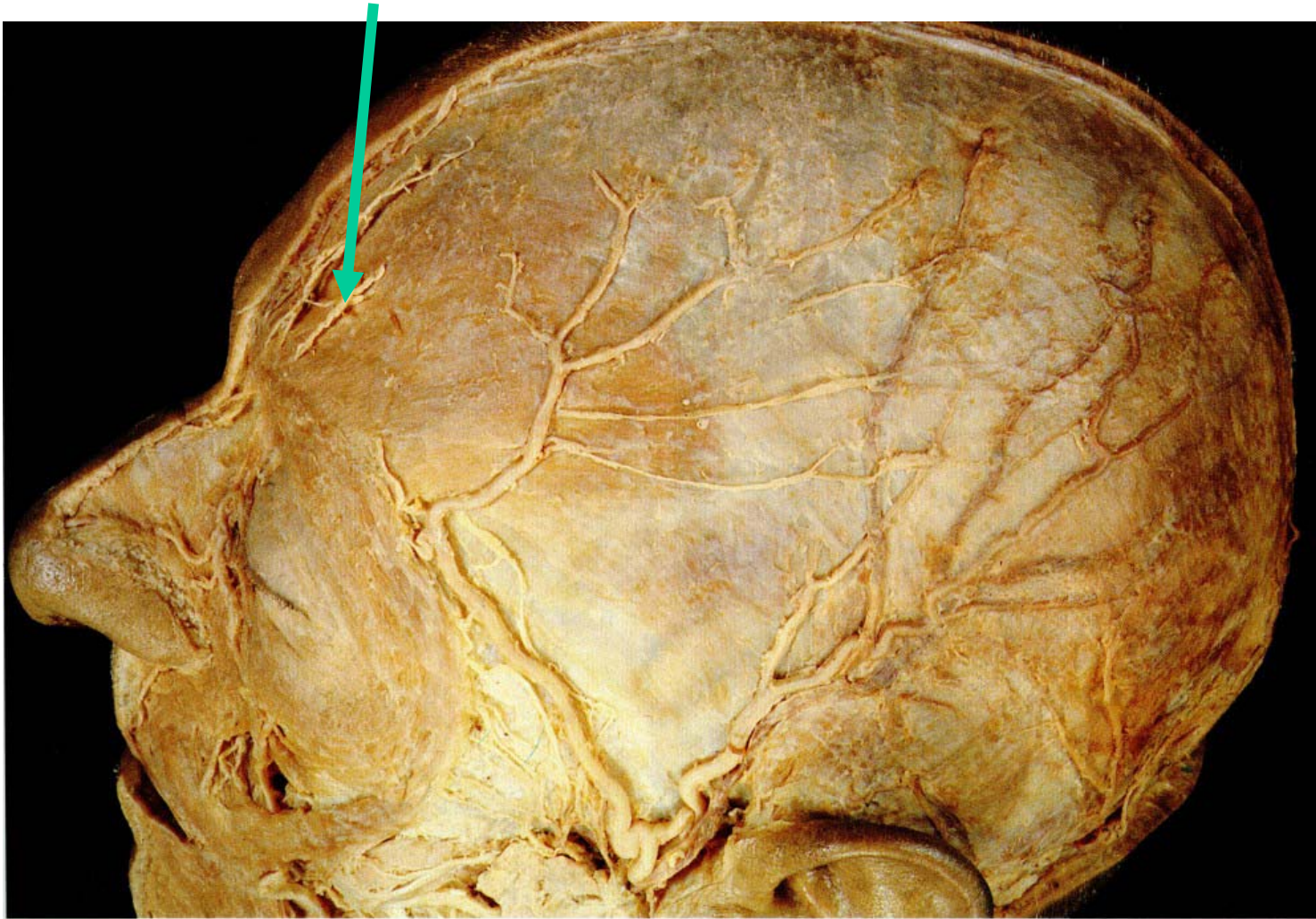
## 8. Identify venous sinus that is located here



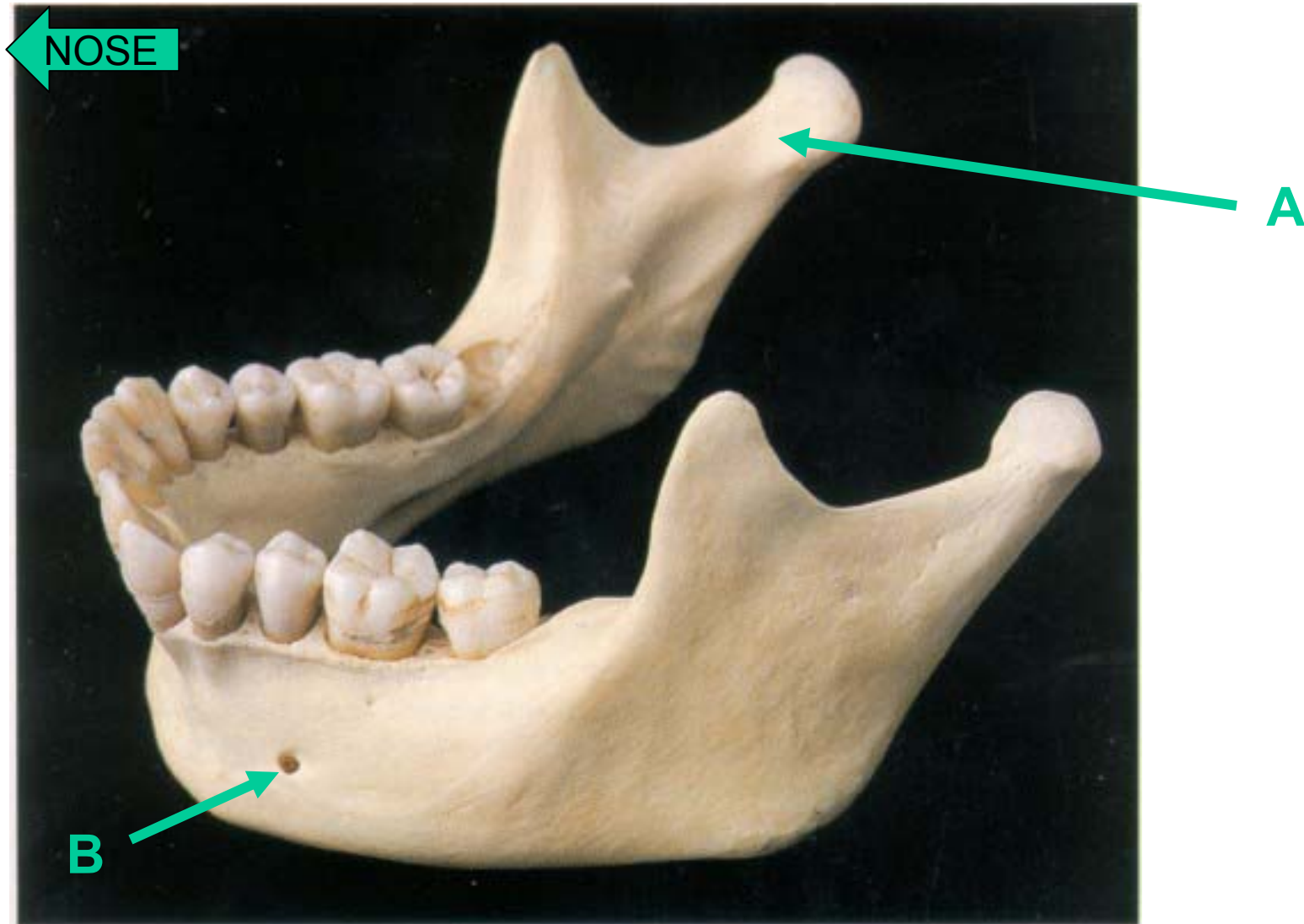


**9. Identify  
A. artery and  
B. nerve that  
courses  
with it**

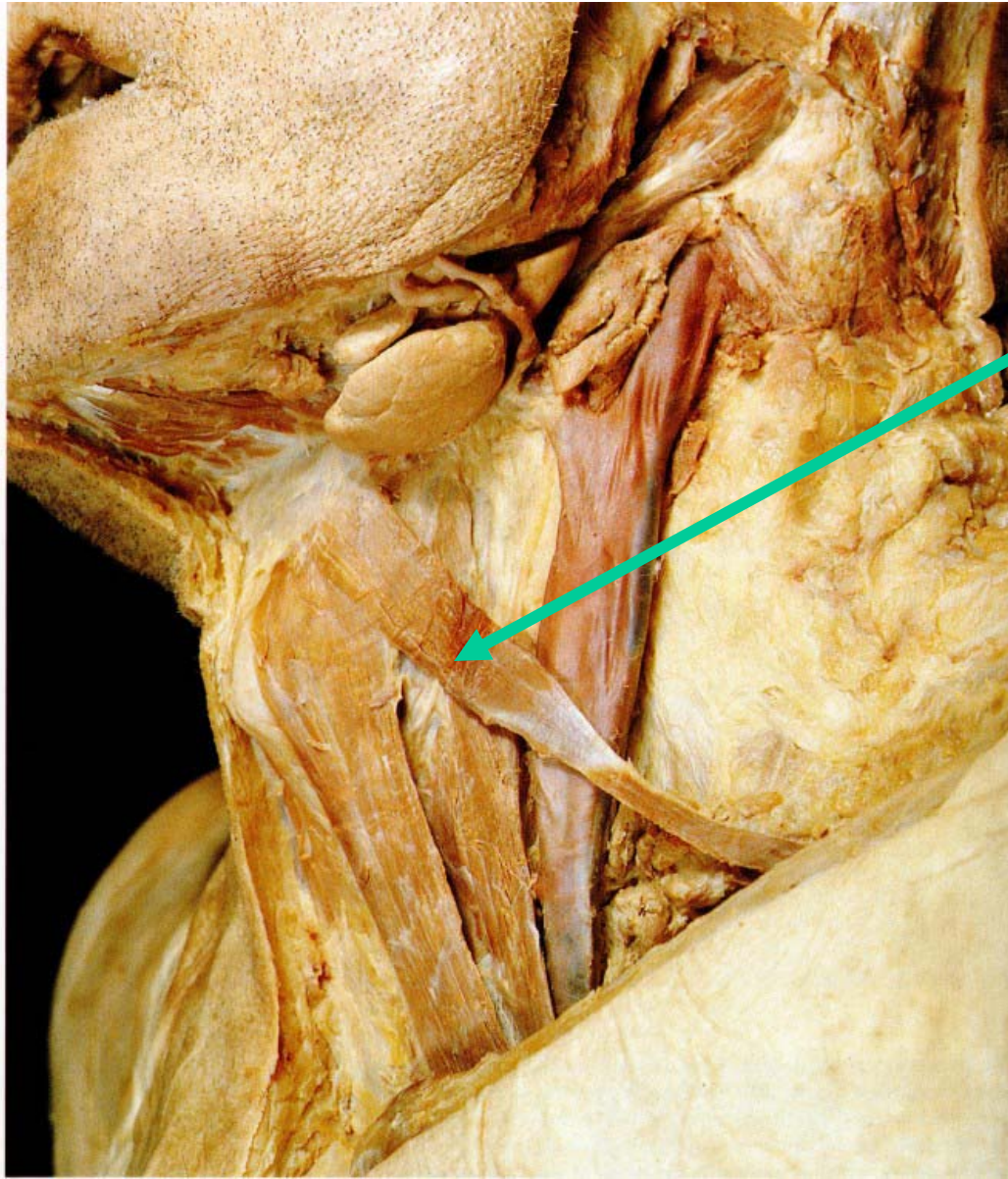
**10. Identify A. nerve and B. name functional components**



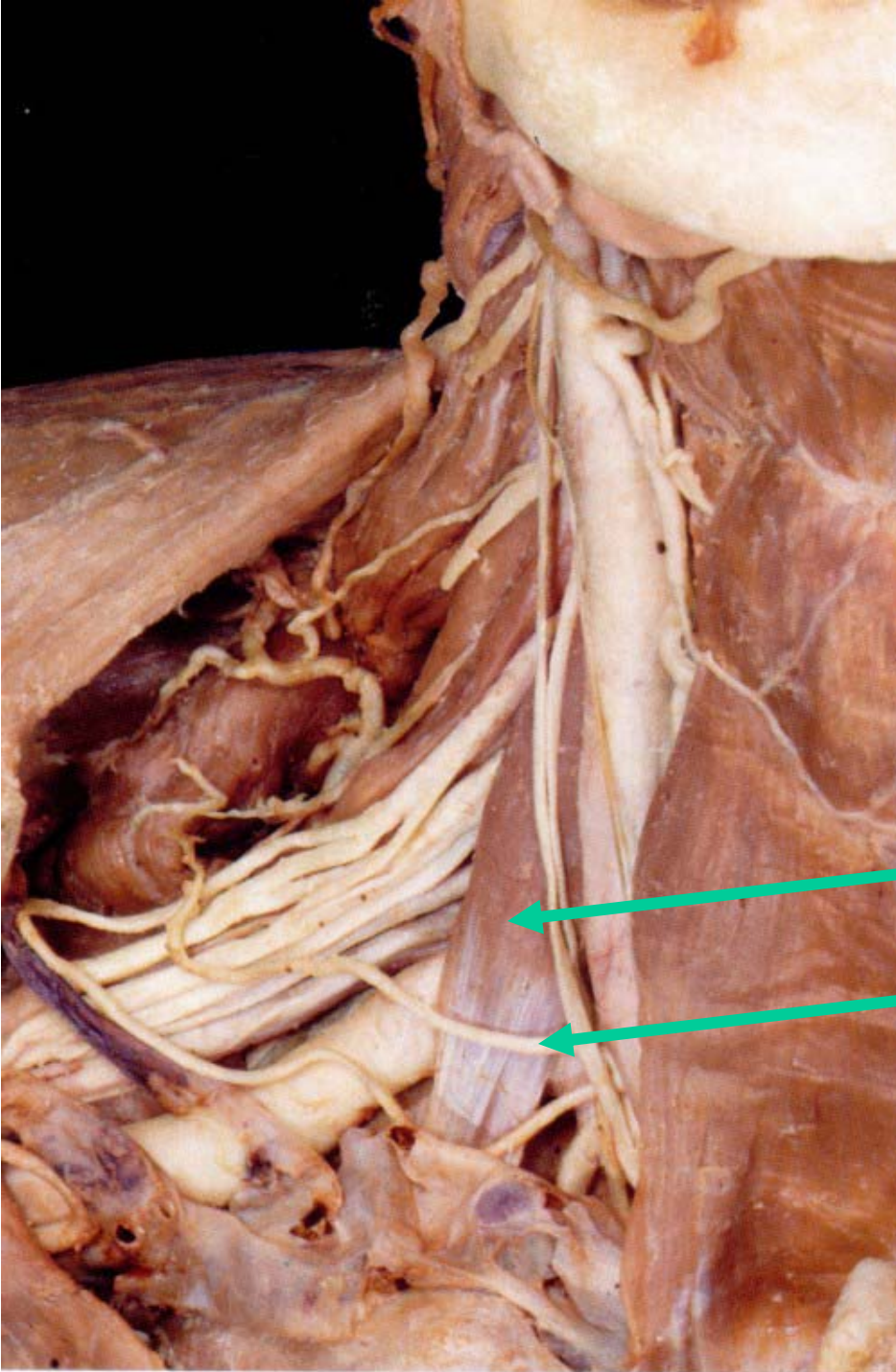
11. A. Identify muscle that inserts at this point and  
B. What passes through this opening



**12. A. Identify muscle, B. What is its insertion (be specific), C. What innervates the muscle**

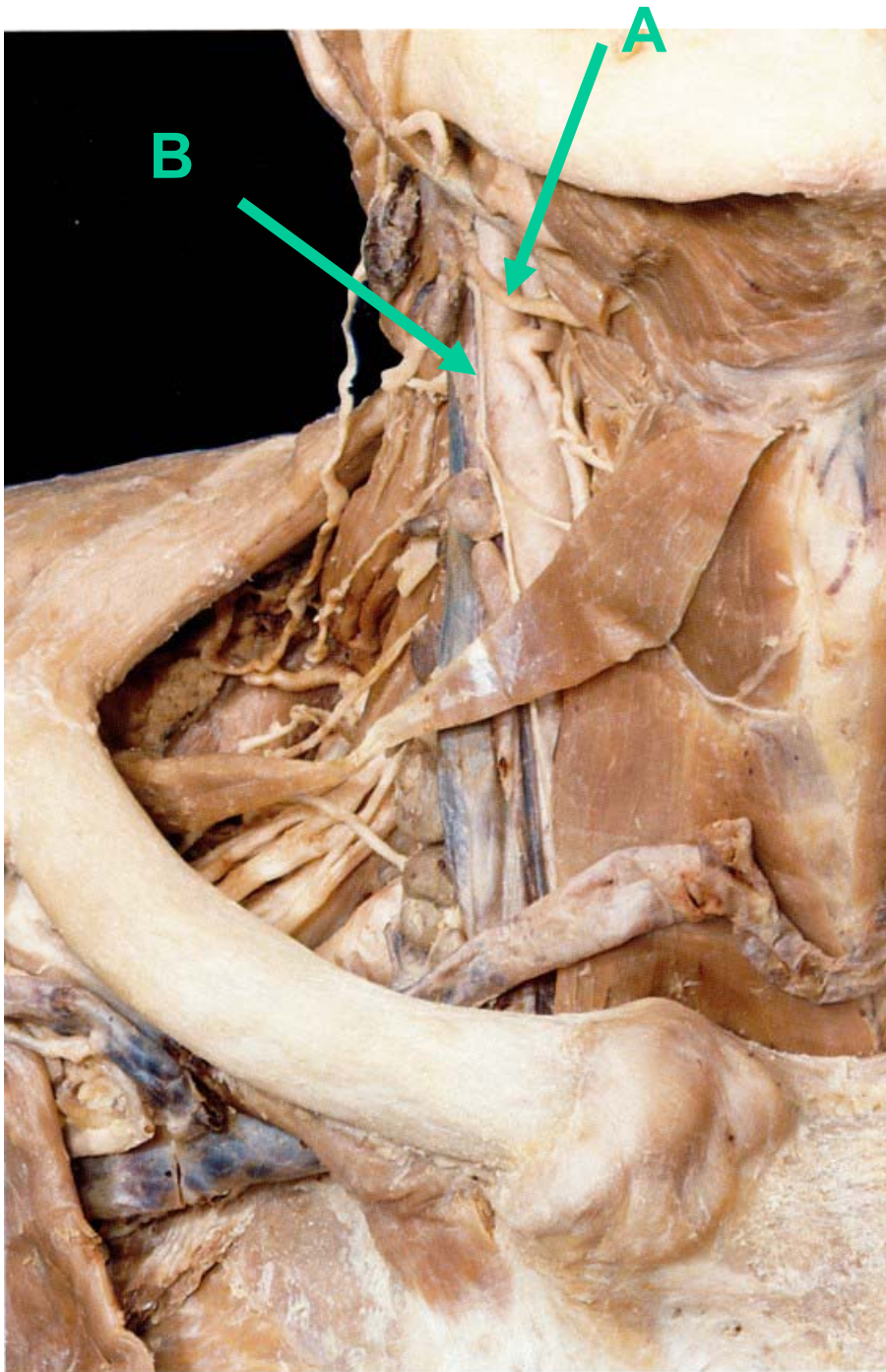


13. A. Identify muscle; B. Identify artery

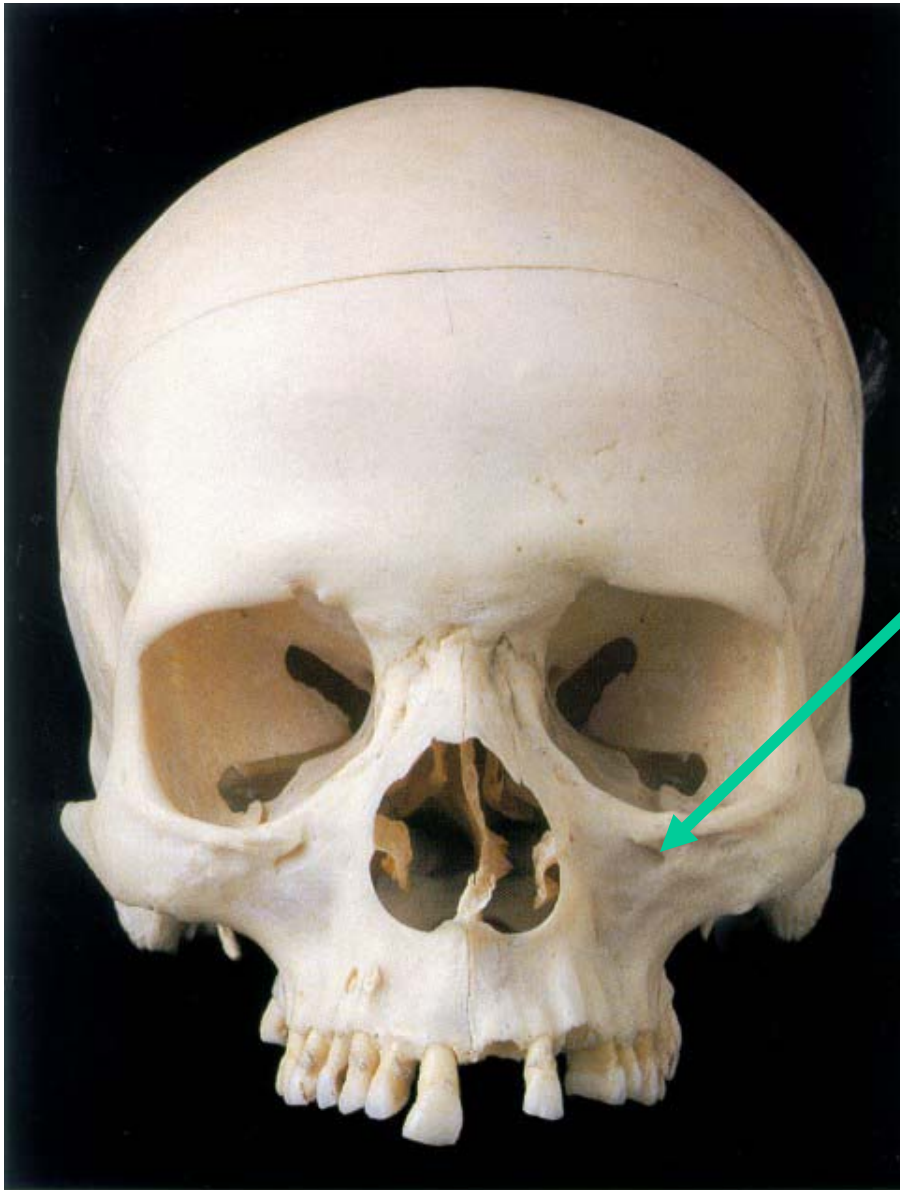


A

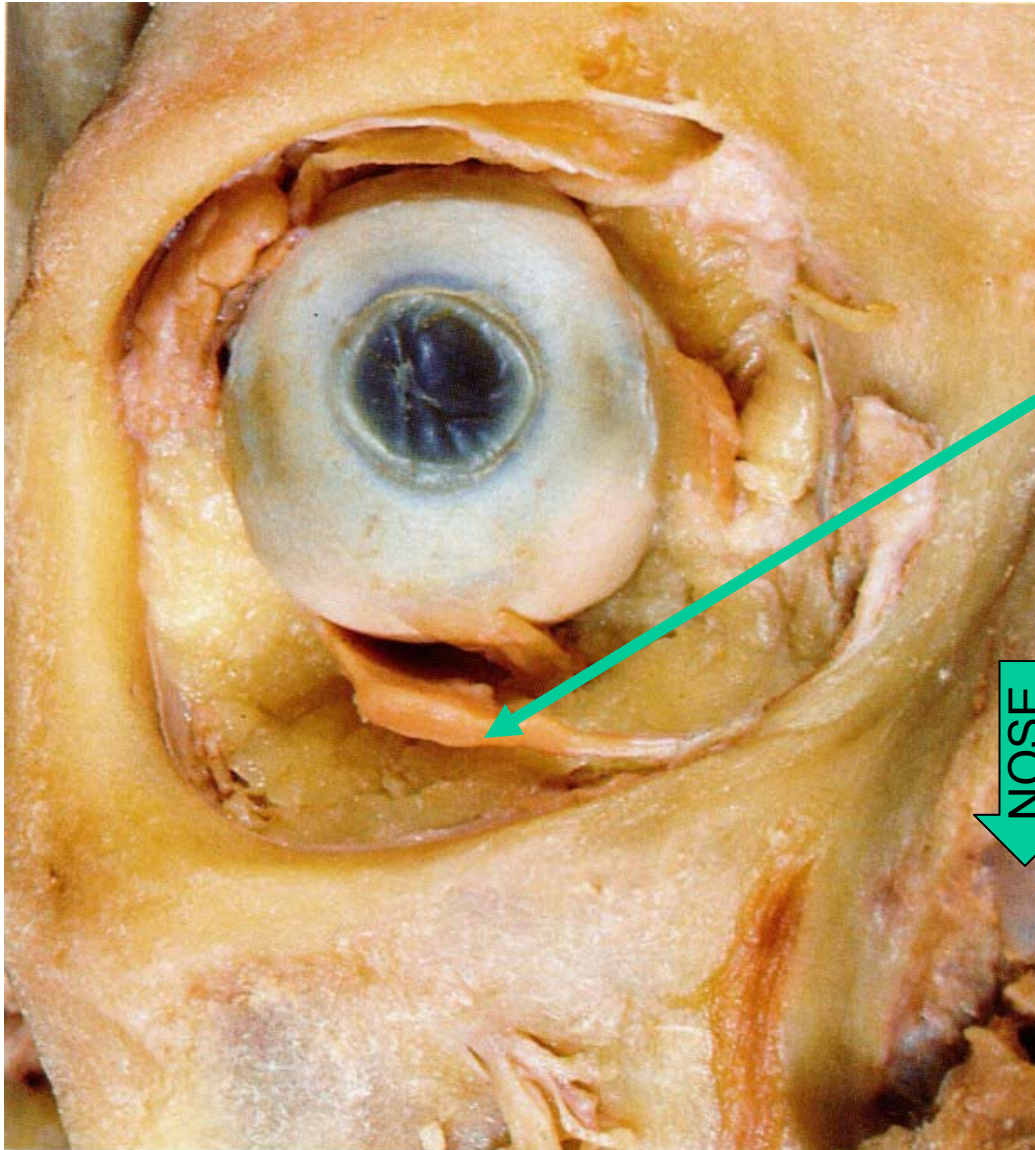
B



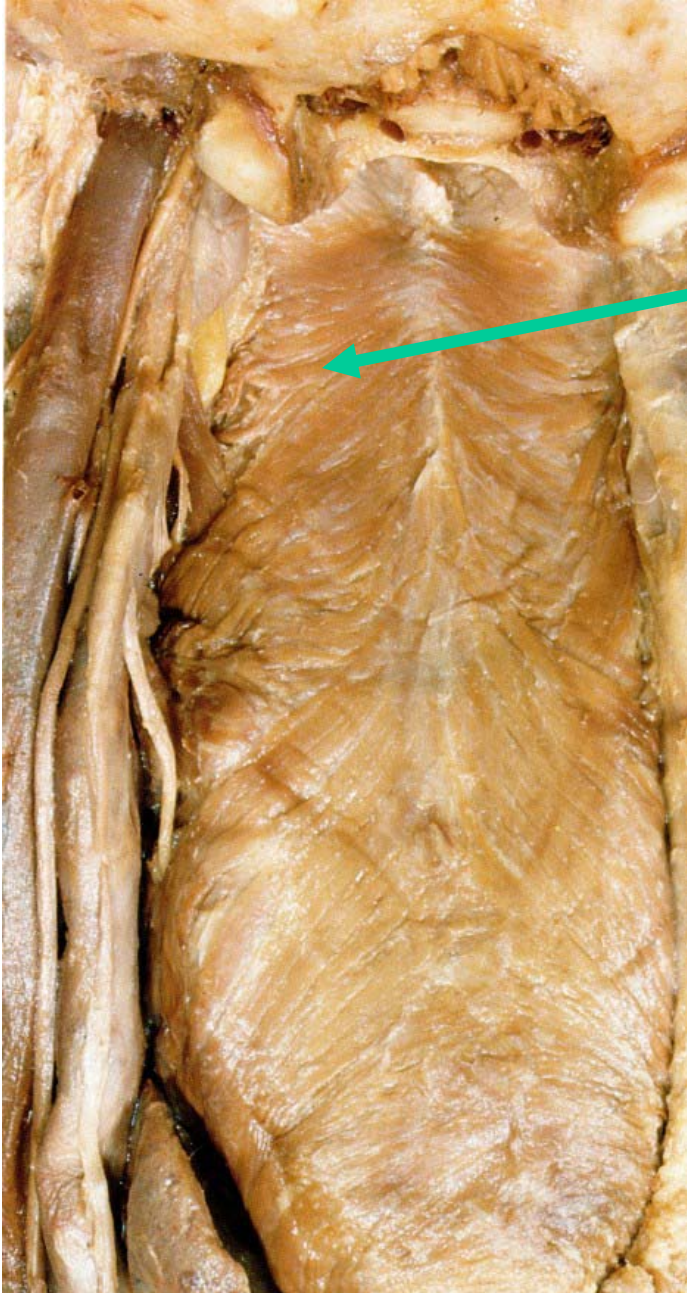
**14. Identify**



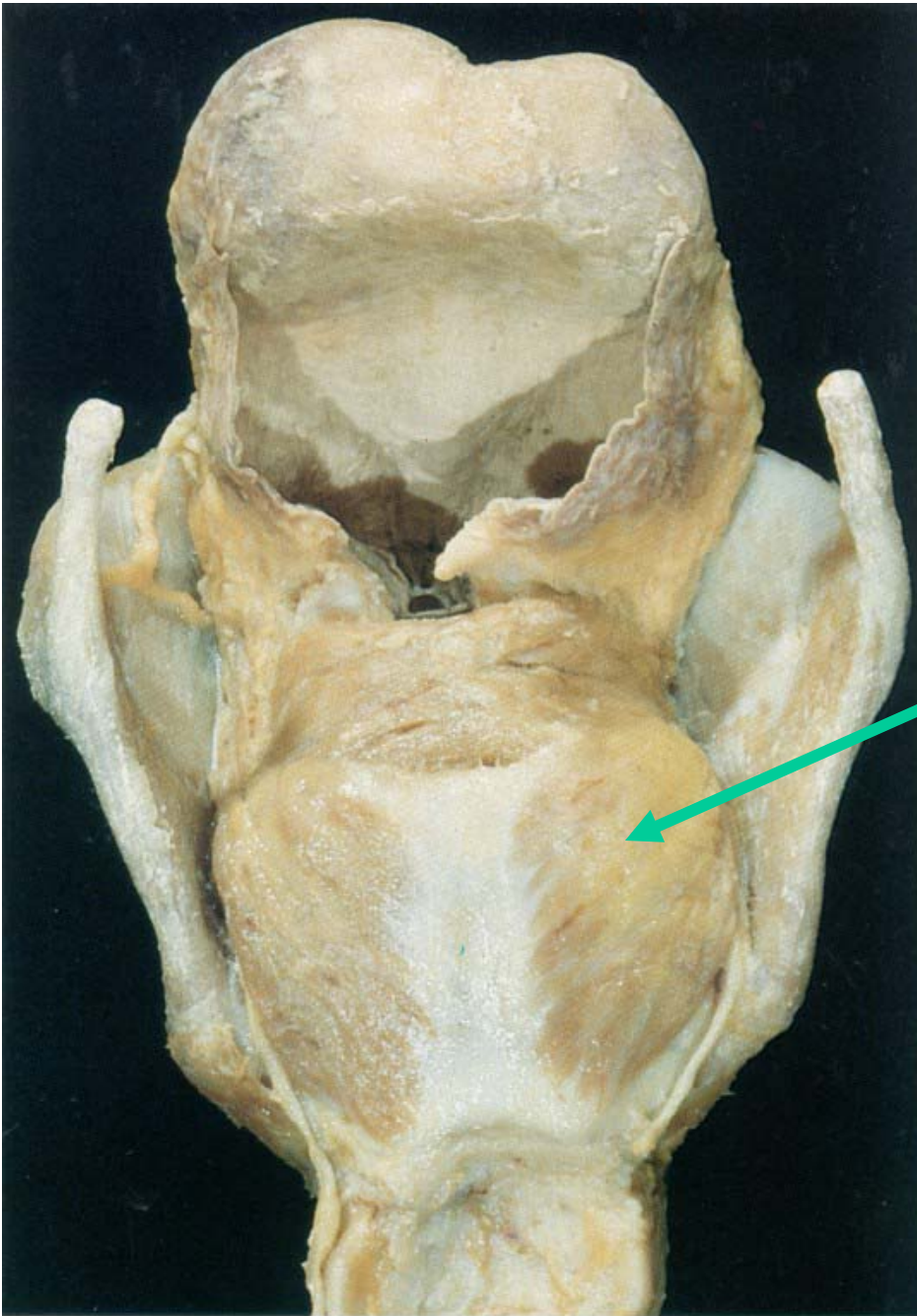
**15. A. Identify nerve that passes through this opening; B. What is it a branch of; C. What functional component(s) does it contain?**



**16. A. What are the actions of this muscle?**  
**B. What nerve innervates it?**

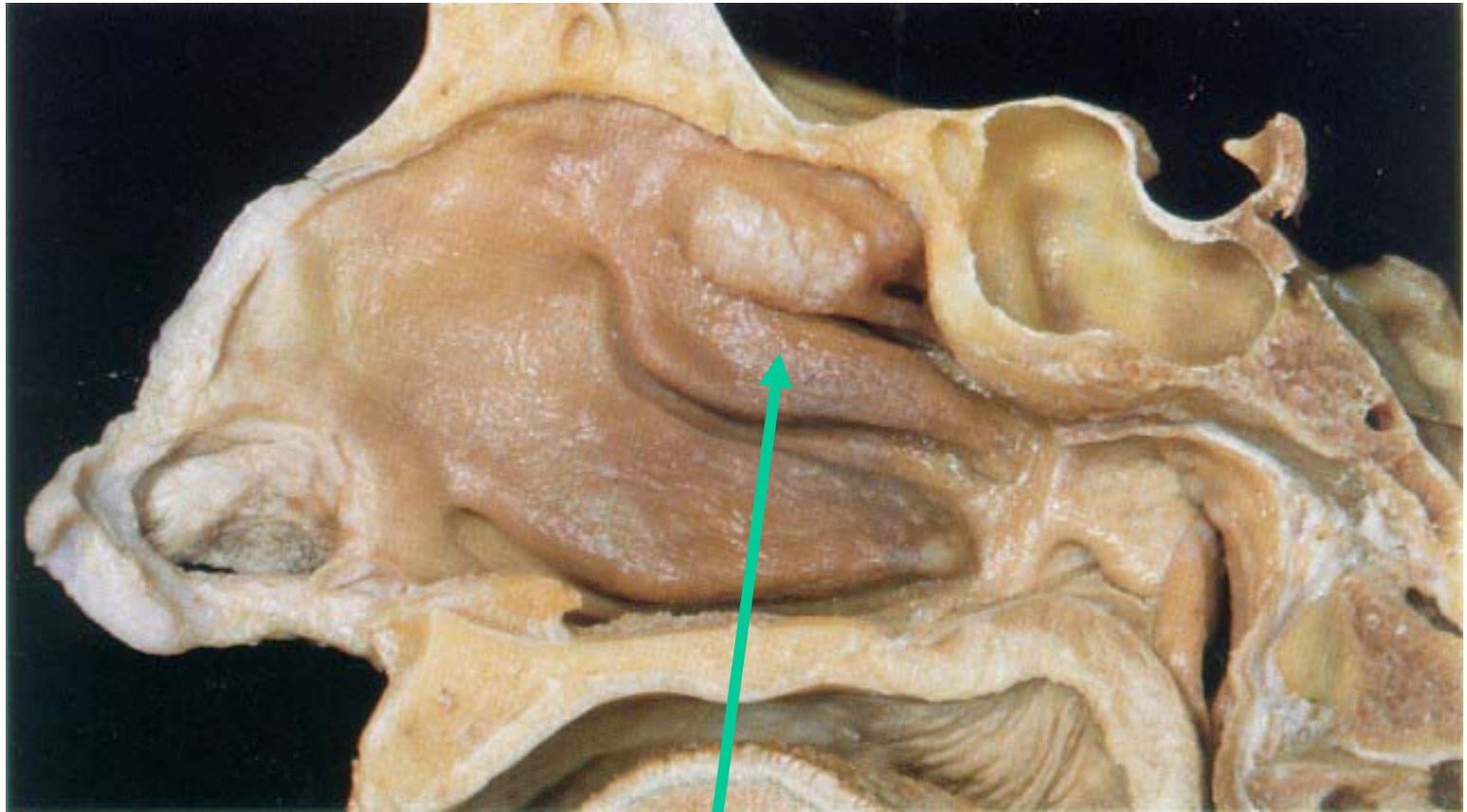


**17. A. Which constrictor?;  
B. What cranial nerves  
innervates it; C. What is  
the functional component  
of its innervation?**



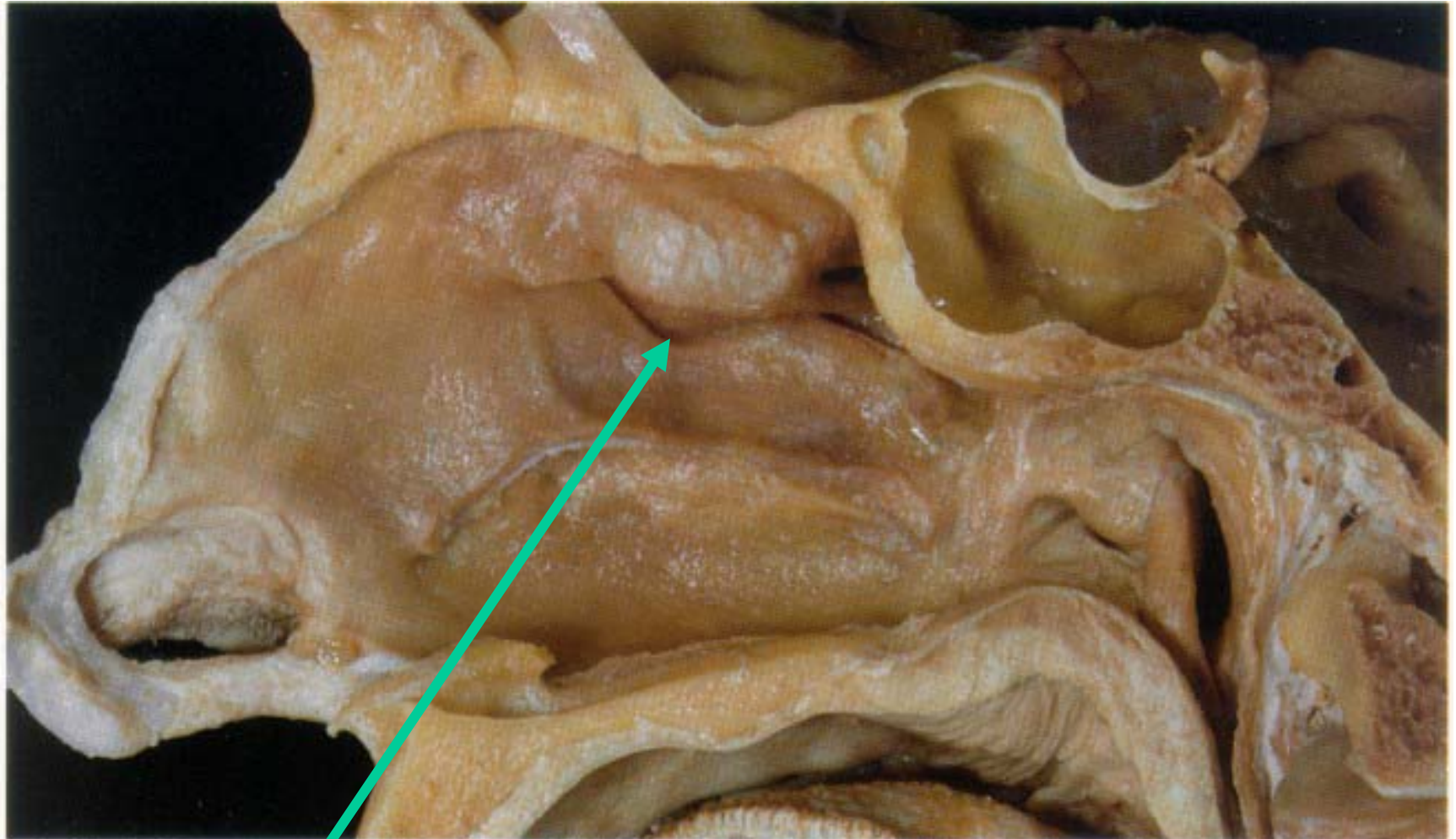
**18. A. Identify  
muscle and B. give  
action**

← NOSE



**19. A. Identify structure and  
B. name bone that forms it**

← NOSE



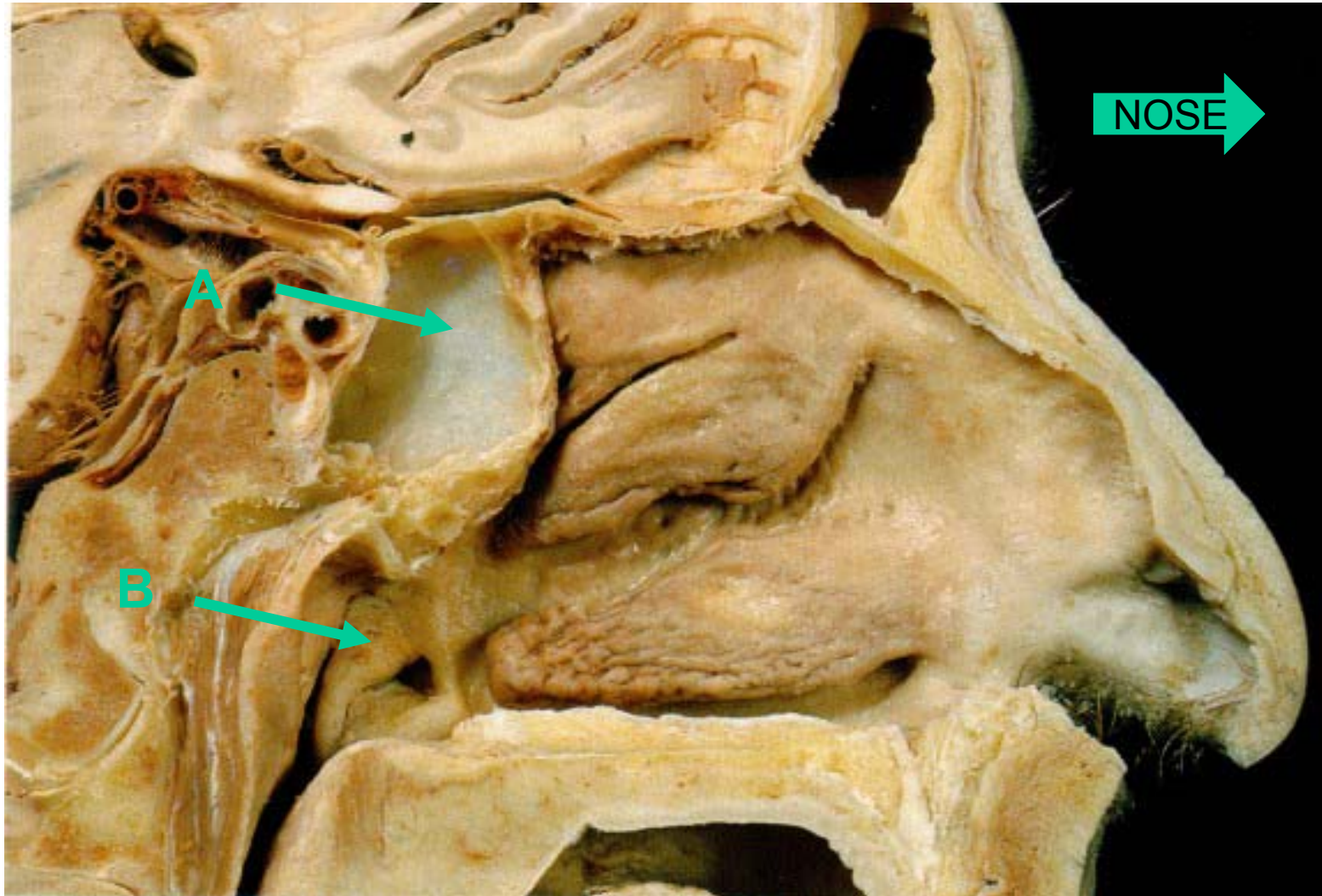
**20. A. Identify opening and B. name all sinuses that open into it**

← NOSE

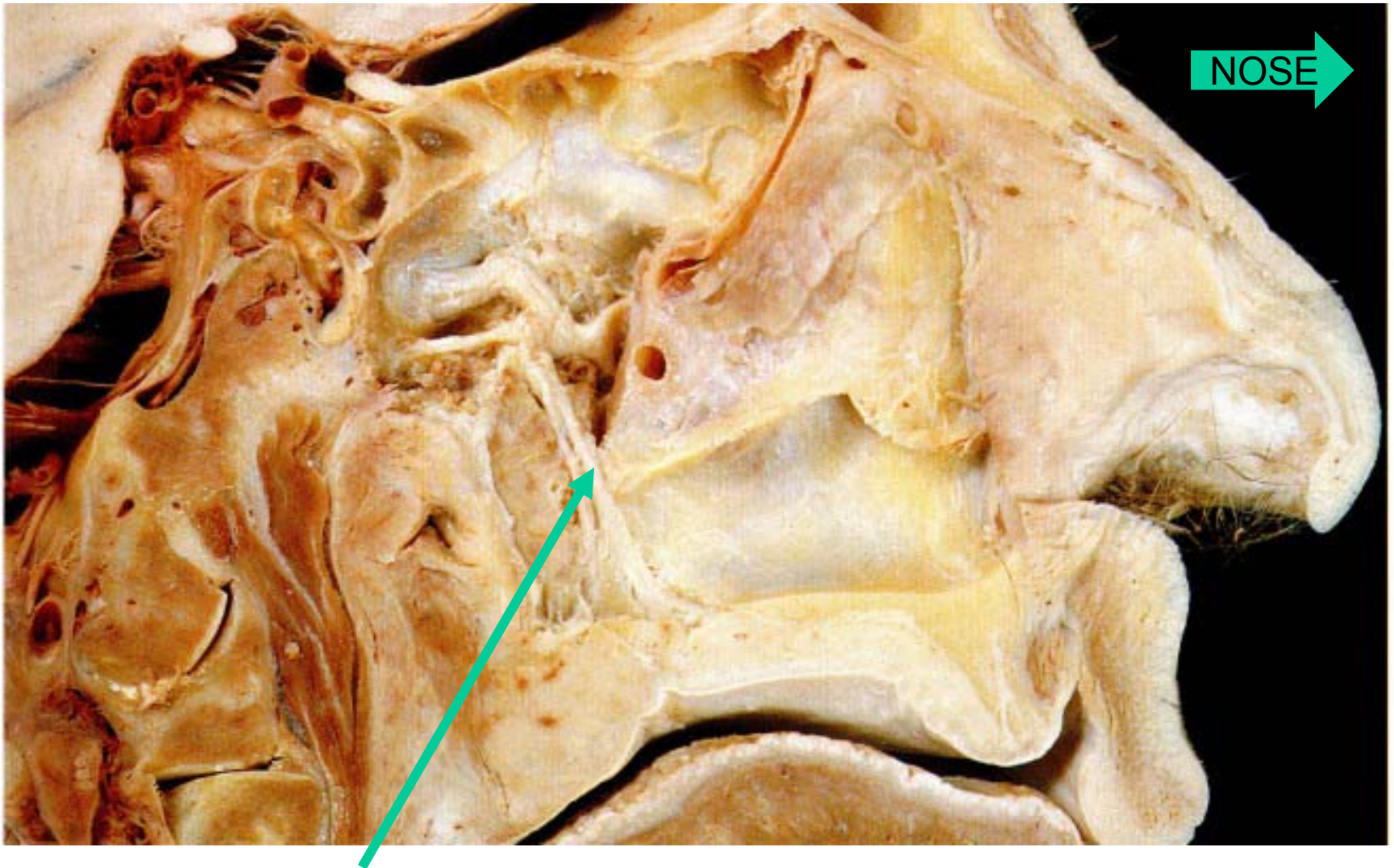


**21. A. Identify muscle and B. name nerve that innervates it**

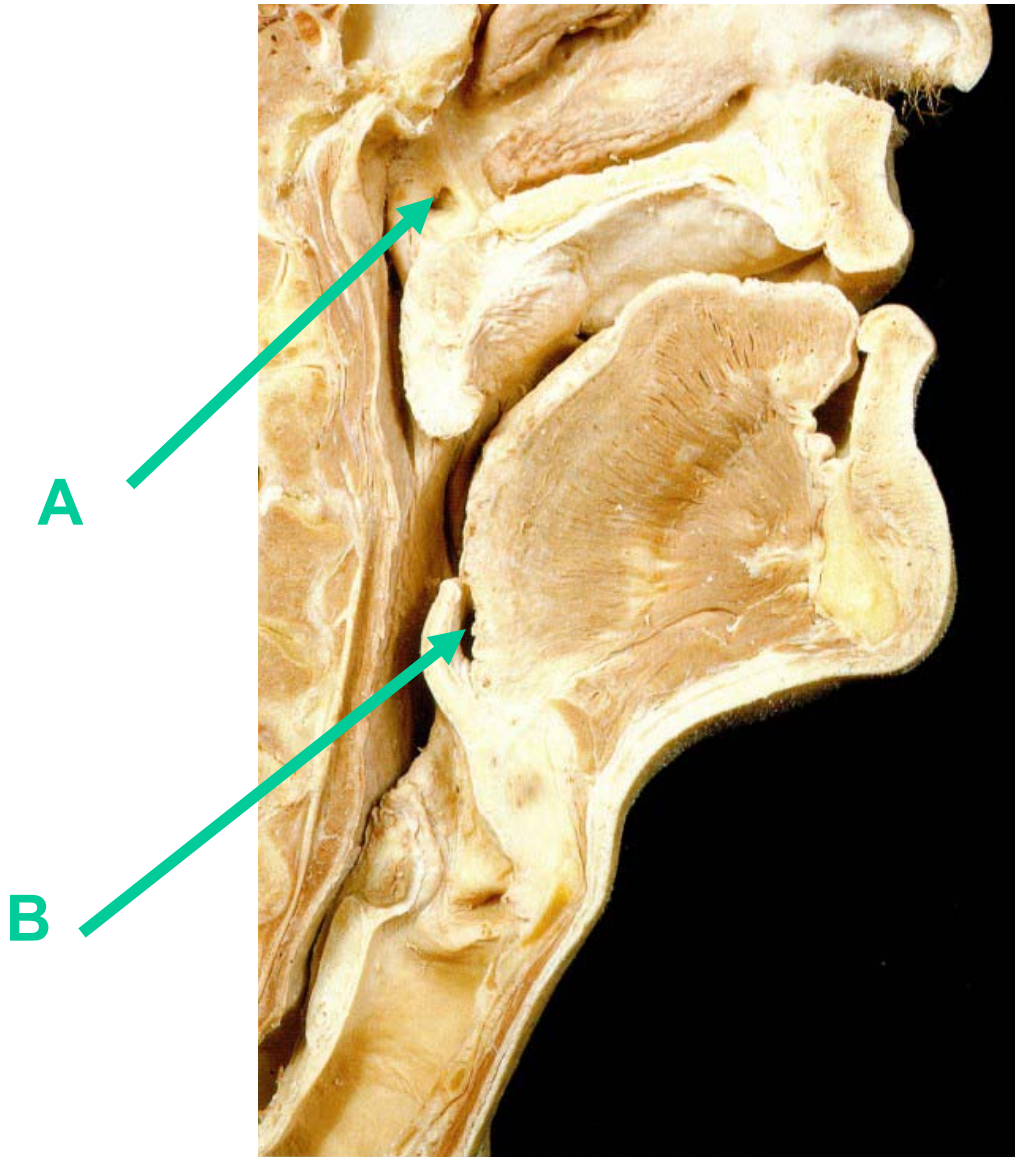
**22. A. Identify sinus, B. What is the specific name of this structure?**



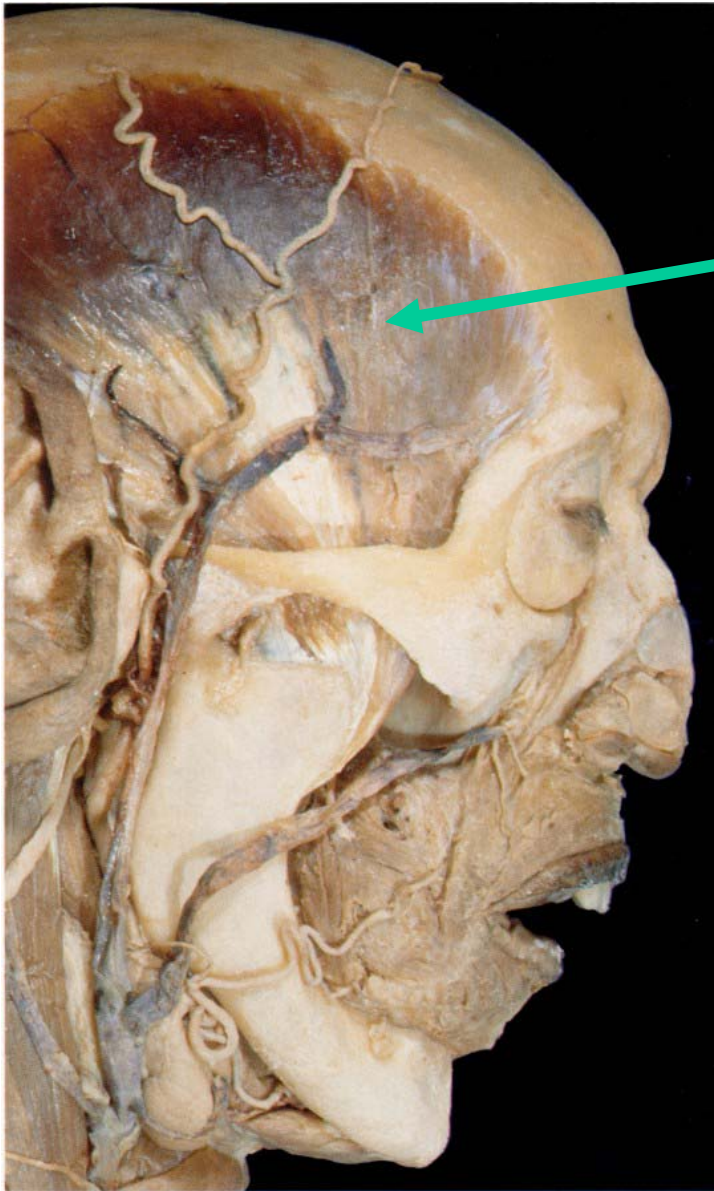
## 23. A. Identify Nerve



NOSE →

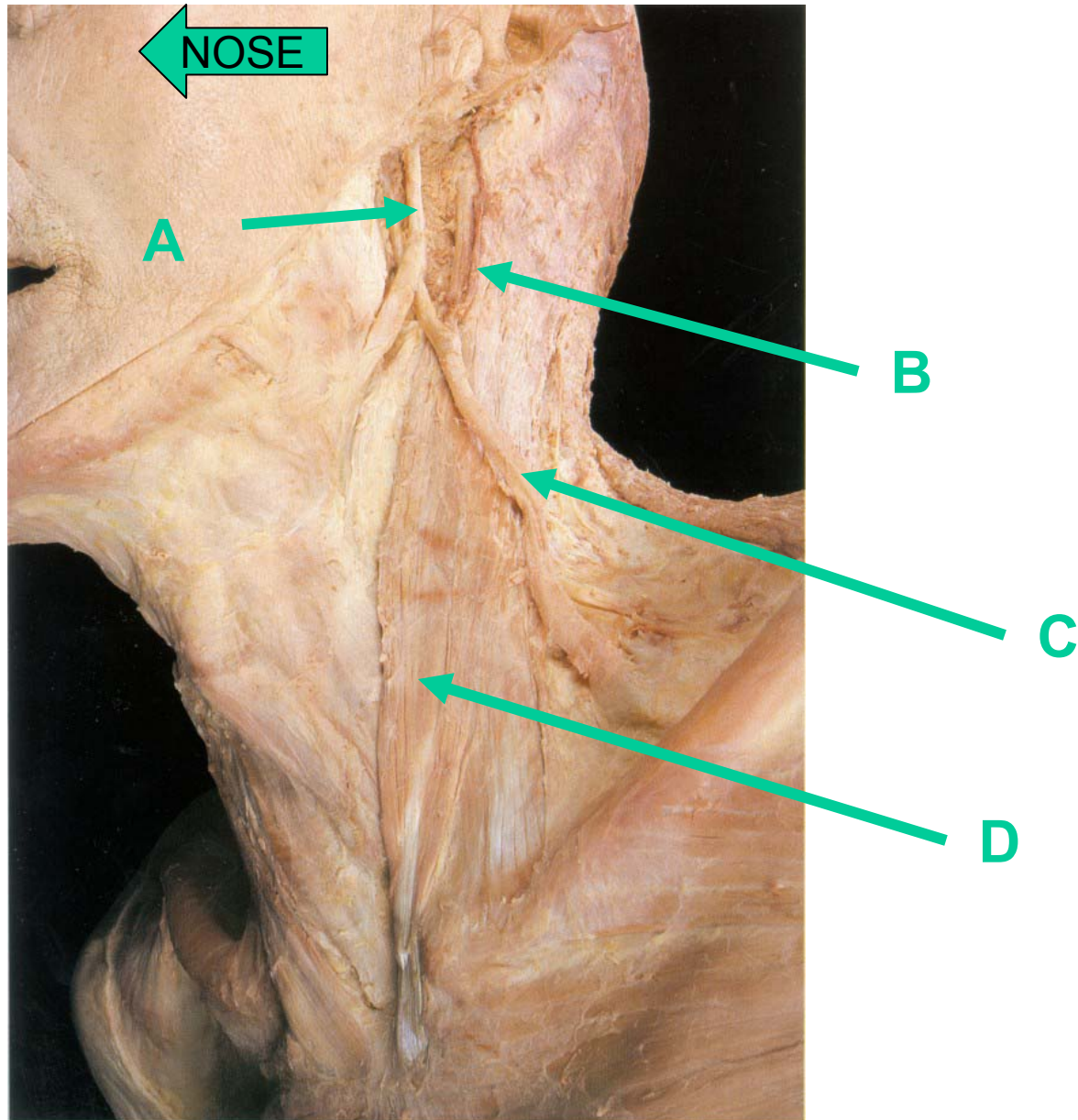


**24. A. What is the embryological origin of this structure; B. What is the name of this space?**



**25. A. Identify muscle;  
B. Actions of muscle;  
C. Insertion of muscle:**

26. A, B, C Identify veins; D. What are the actions of this muscle



# KEY: Practice Practical Exam for Head and Neck

1. A. Genioglossus, B. Geniohyoid, C. Mylohyoid
2. A. Lingual N., B. Hypoglossal N.
3. A. Chorda Tympani, B. Lingual N.
4. A. False Vocal Fold, B. Cricoid cartilage (Lamina)
5. Middle Meningeal Artery in Dura
6. A. Inferior Sagittal Sinus, B. Superior Sagittal Sinus
7. A. Tentorium Cerebelli, B. Transverse Sinus
8. A. Cavernous Sinus, B. Inferior Petrosal Sinus
9. A. Superficial Temporal Artery, B. Auriculotemporal Nerve
10. A. Supraorbital Nerve, B. GSA
11. A. Lateral Pterygoid, B. Mental nerve, artery and vein
12. A. Omohyoid, B. Hyoid bone (body of hyoid), C. Ansa Cervicalis
13. A. Scalenus Anterior, B. Transverse Cervical Artery
14. A. Hypoglossal Nerve, B. Ansa Cervicalis
15. A. Infraorbital N., B. V2 (Maxillary Division of V); C. GSA
16. A. Raises, Abducts, Laterally rotates eye; B. III
17. A. Superior Constrictor of Pharynx; B. Vagus (X); C. SVE
18. A. Posterior Crico-arytenoid, B. Opens rima glottidis
19. A. Middle Concha, B. Ethmoid Bone
20. A. Hiatus semilunaris; B. Maxillary, ant. ethmoidal, Frontal (to infundibulum)
21. A. Levator Palati, B. Vagus Nerve (X)
22. A. Sphenoidal air sinus, B. Torus Tubarius
23. Greater Palatine Nerve
24. A. First branchial pouch, B. Vallecula
25. A. Temporalis muscle, B. Elevates and retrudes mandible, C. Coronoid process of mandible
26. A. Retromandibular vein, B. External Jugular vein, C. Flexes head when acting on both sides; rotates head to opposite side when acting on one side